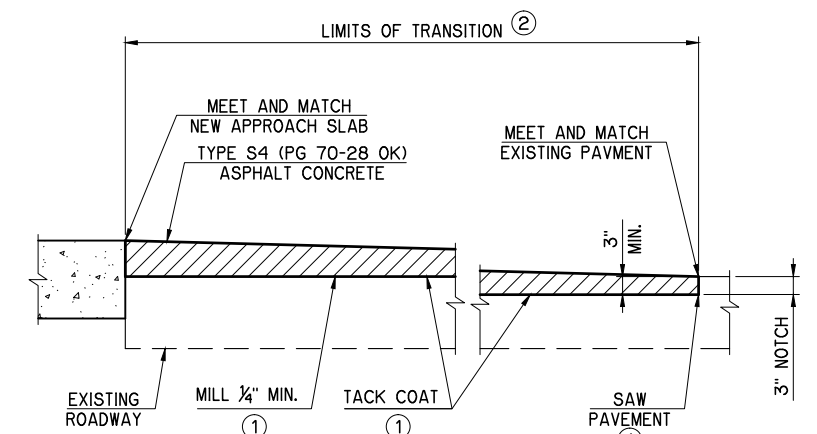
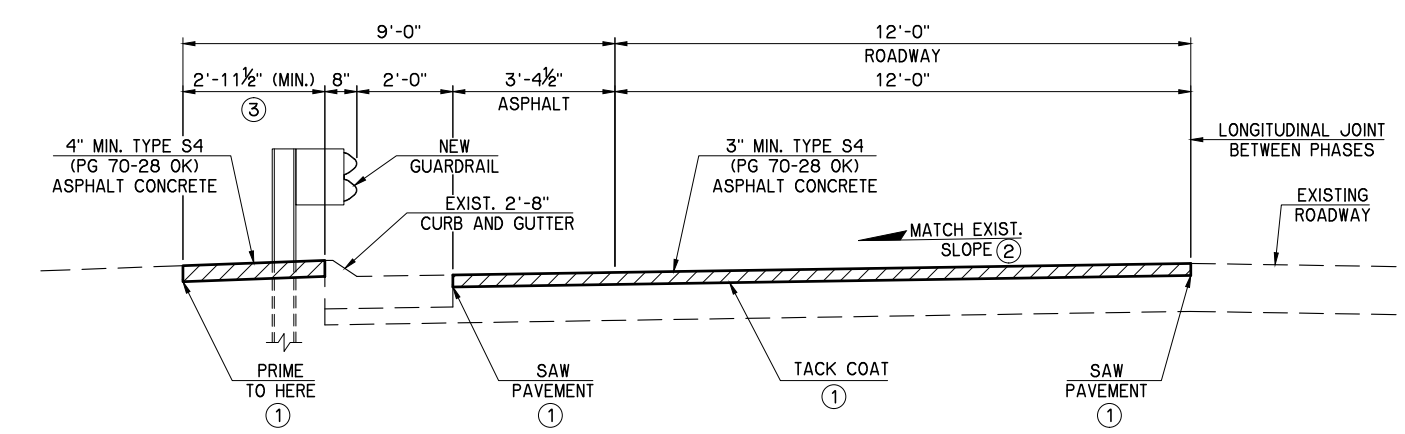
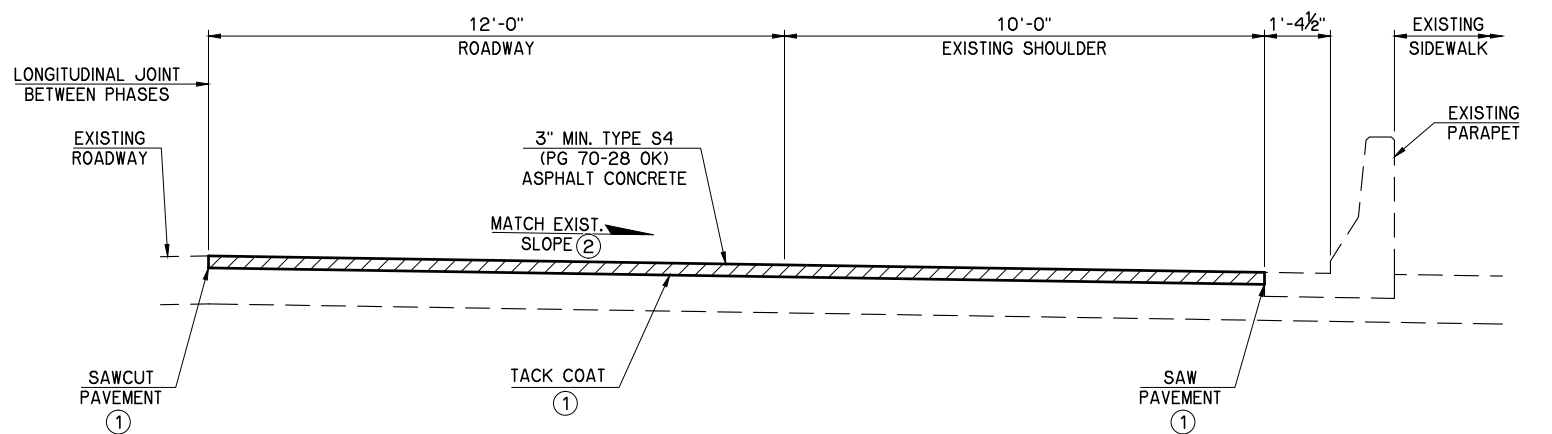
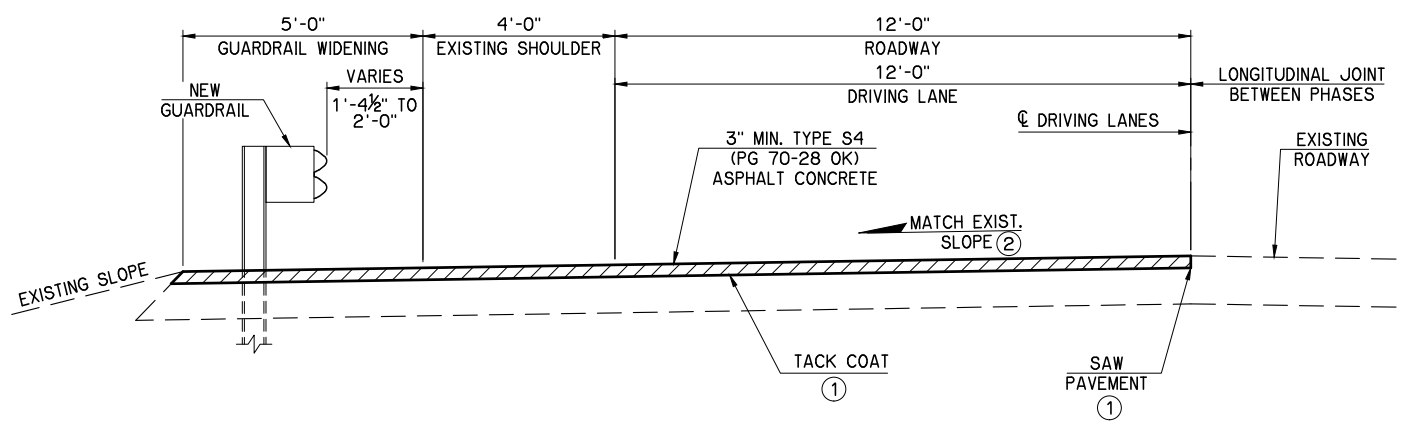
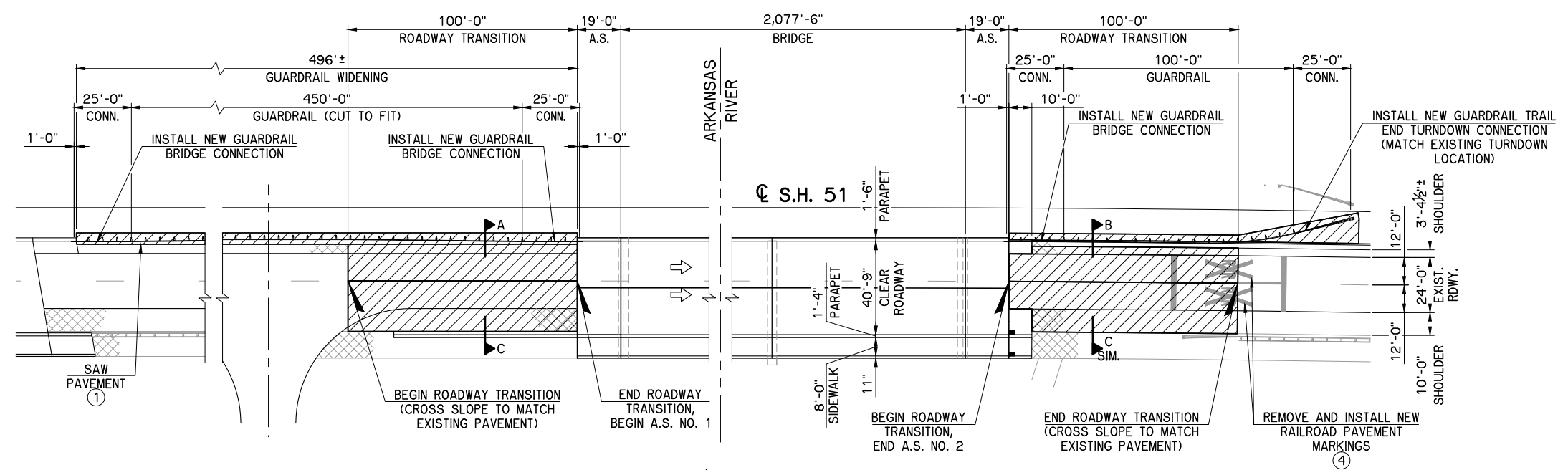


REV. NO.	REVISIONS	DATE



- NOTES:
- DEPTH OF MILLING SHALL BE SUFFICIENT TO PROVIDE A 3" MINIMUM DEPTH AS SHOWN. COST OF SAWING PAVEMENT, PRIME COAT AND TACK COAT INCLUDED IN OTHER ITEMS OF WORK.
 - PROFILE GRADE LINE OUTSIDE THE LIMITS OF THE BRIDGE AND APPROACH SLABS TO BE ESTABLISHED PER ENGINEERS APPROVAL.
 - MAINTAIN 2'-0" MIN. BEHIND GUARDRAIL POSTS.
 - FIELD VERIFY LOCATION OF EXISTING RAILROAD PAVEMENT MARKINGS. ADDITIONAL MILLING AND OVERLAY MAYBE REQUIRED FOR REMOVAL AND INSTALLATION OF RAILROAD MARKINGS, COST TO BE INCLUDED IN OTHER ITEMS OF WORK.

SH 51 NB OVER ARKANSAS RIVER		TULSA COUNTY	
ROADWAY TRANSITION DETAILS		Design	DMH
		Detail	FEZ
		Check	JLC
STATE OF OKLAHOMA		WHITE ENGINEERING ASSOCIATES	
		DEPARTMENT OF TRANSPORTATION	
JOB PIECE NO. 31358(04)		SHEET NO. 36	

I:\Active\1626\Drawings\36 Roadway Transition Details.dwg, 6/12/2017 11:30:48 AM, Fred